

## All Aluminum BIPV Architectural Aesthetics



### Lighter Weight

All aluminum BIPV accounts for only 30% of the weight of carbon steel BIPV



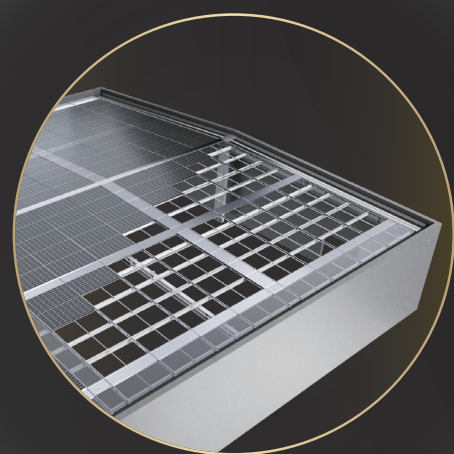
### Stronger Material

The yield strength of TAI aluminum is 270 MPa, exceeding the national standard by nearly 60% compared to 6063 aluminium



### Wind Resistance

Withstand typhoon up to class 14



### Corrosion Resistance

Better anti-corrosion than HDG Steel and MAC Steel under the same condition



### Long Service Life

Product service life equals to the service life of power plants and buildings



### Economical and Environmentally Friendly

100% Recyclable

## Fire Resistance & Waterproof Certification



The whole range of TaiyangRoof BIPV products have been certified for fire resistance by the national authoritative CMA certification body, CNAS, IAC-MRA, a Chinese accredited/international mutual recognition testing body, and in the fire resistance limit test of GB/T 9978, the fire resistance limit exceeds 1 hour, which meets the requirements of the building design fire code and the relevant fire inspection and acceptance standards.



TaiyangRoof BIPV passed the TÜV North German test for overall and partial waterproofing performance, with a continuous rainfall duration of 2h. The results show that the whole range of products can cope with daily rainfall of 3168mm, far exceeding the standard of 250mm/day for very heavy rainfall, with excellent waterproofing performance.



### HEADQUARTER

30F, W square, 1801 Huandao East Road, Siming District, Xiamen, China.

### SHANGHAI R&D CENTER

Unit 704, Building 2, Lippo Plaza, No. 88 Shenbin Road, Xinhong Street, Minhang District, Shanghai

### CHINA PRODUCTION BASE

Guanshan Industrial Park, Changtai County, Zhangzhou City, Fujian Province

WEBSITE: [www.antisolar.com](http://www.antisolar.com)

EMAIL: [sales@antisolar.com](mailto:sales@antisolar.com)

TELEPHONE: 0592-5920051



# 2023

「 A GREAT ROOF WILL SHINE 」

## TAIYANGROOF

### All Aluminum BIPV System Solution

Building Integrated Photovoltaic Solution

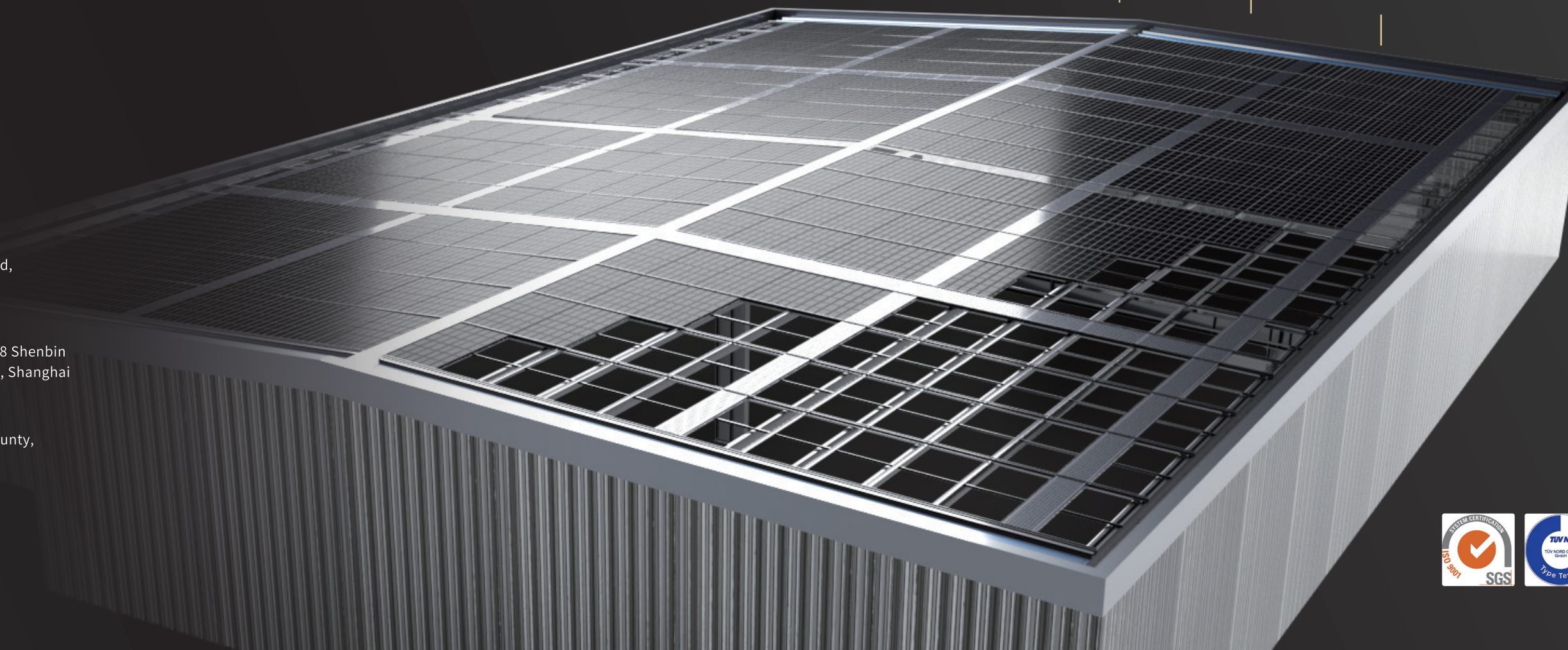
20%+  
Material strength

100%  
Waterproof

50%  
More efficient

20%  
Lower cost

50+  
Years of service life



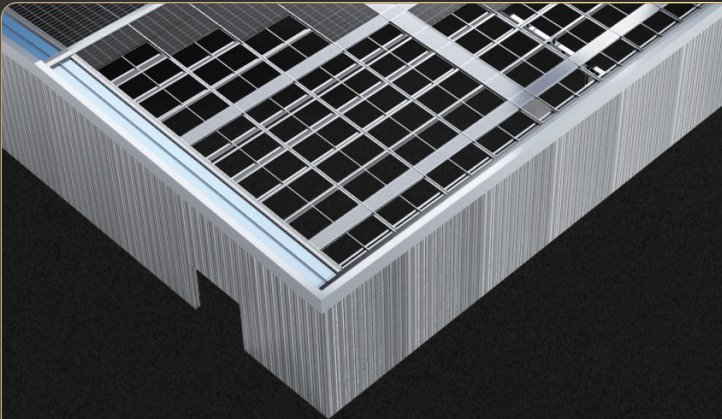


# Full Range of Solutions

## INSPIRATION

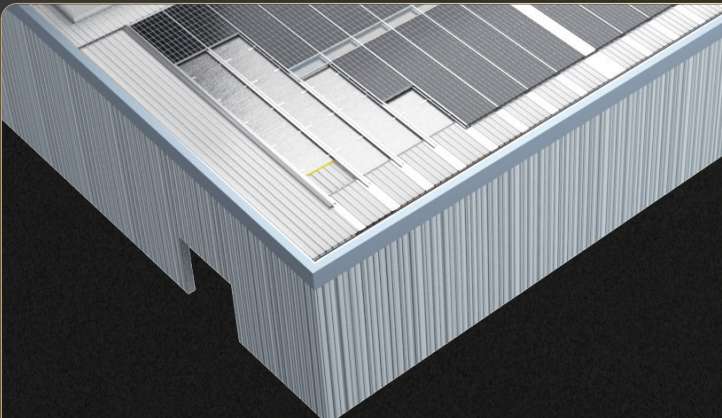
Antaisolar's TaiyangRoof all-aluminium BIPV solution offers a diverse range of products according to different scenarios and needs. The Single Roof solution is designed for new factories and refurbished plants, and can accommodate special insulation requirements. The Double Roof solution is designed for old factory roofs and can be adapted to a wide range of traditional steel decks. From new roofs to old ones, the Taiyang Roof solution offers a green boost to factory buildings.

### Single Roof



#### New & Reroofing Plant

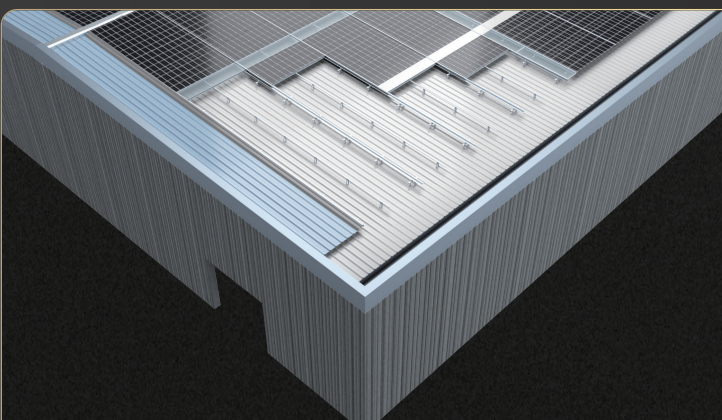
- Deeply integrated with factory buildings.
- Greatly improve power generation efficiency while securing building safety.
- Effectively reduce roof weight.
- 100% waterproof.
- Convenient installation and maintenance.



#### Meet Insulation Needs

TaiyangRoof is an integrated system created for the waterproof and insulation of special factory roofs. It is built on top of the insulation layer by means of a Z-frame elevated support seat to meet the dual needs of insulation and waterproof.

### Dual Roof



#### Metal Roof

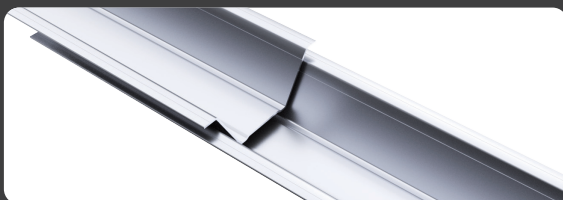
The BIPV system layer can be added to the roof without removing the original roof, and can be flexibly adapted to many types of metal roofs, effectively extending the life of the old roof and achieving double waterproofing guarantee.

# Superior Waterproof Performance

## Withstand 250mm daily rainfall

## INSPIRATION

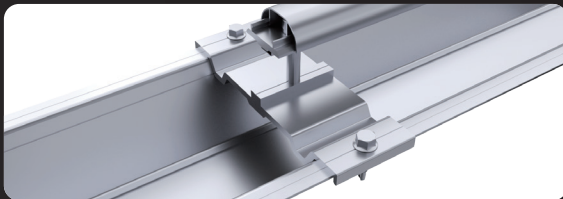
Based on six waterproof structural components, the design concept of "external drainage and internal hydrophobic" is able to keep 99% of the rainwater outside the structure, while the 1% water that penetrates inside is drained through internal drainage and water conduction, achieving 100% waterproof.



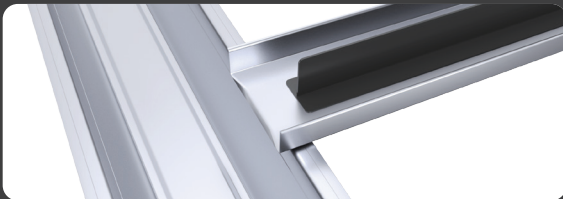
1 Patented V-Shaped Gutter  
Simple installation with excellent waterproof performance



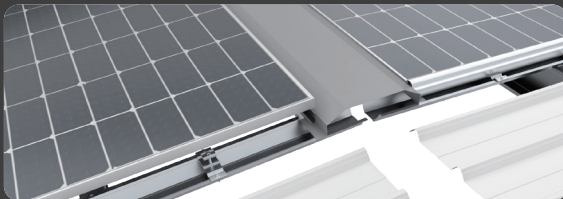
2 Patented U-Shaped Gutter  
Patented downward drainage design to prevent the backflow of sink water



3 Patented Waterproof Cover  
Drainage from the external surface



4 Patent Reversed T Shape Adhesive Tape  
Effectively against vibration, preventing problems caused by thermal expansion and contraction deformation



5 Ridge Cover  
Prevent water leakage at the top of mansard slopes



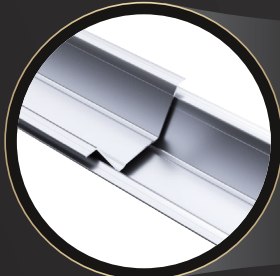
6 Sealed Boundaries  
Connect the gaps between the panels and building, achieving 100% waterproof

# Simple installation

## Placed, Clamped, Buckled

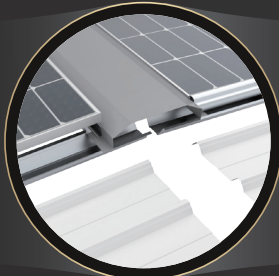
## INSPIRATION

At the beginning of the design process, Antaisolar took into account the actual construction scenario and started from a "simple" point of view. The waterproof installation part can be summarised in three words: "PLACED, CLAMPED, BUCKLED", which allows for one-step installation and saves time. Comparing to traditional installation methods, reducing costs by 20%.



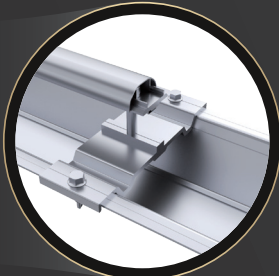
Placed

Stack V-shaped gutters Fewer consumption and easier installation than the "top-to-top" connection



Clamped

Press to fix the ridge covers Nail-free installation



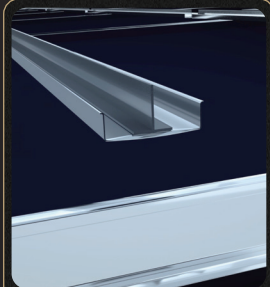
Buckled

Snap-on waterproof covers A change to the traditional installation method

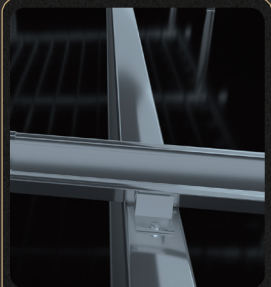
# Hassle-Free O&M

## INSPIRATION

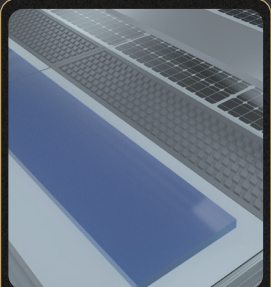
Once delivered, the products will accompany users for at least 25 years or even longer. To bring users a worry-free O&M experience, Antaisolar adopts the concept of preventive, lightweight, customised O&M and characteristic O&M in O&M to reduce the possibility of damage occurrence, basically achieve maintenance-free, reduce O&M workload, and support customisation with wide range choice.



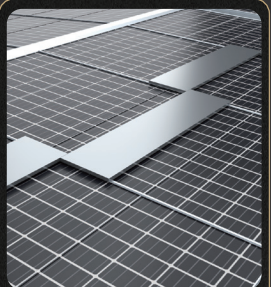
Preventive O&M  
Maintenance-free components decrease the possibility of potential damage



Lightweight O&M  
Using innovative structural design to achieve simple components disassembling



Customized O&M  
alternative O&M channels suit various requirements



Characterised O&M  
Access pedals available on special request for O&M and installation