



RAISE A GREEN WORLD

ANTAISOLAR MOUNTING SYSTEM

Web | www.antisolar.com

HQ Add | 25-27th Floors, Inland International Financial Center, No. 1 Jinrong Street,
Huli District, Xiamen, China

Production Base Add | Guanshan Industrial Park Changtai County, Zhangzhou, China



ANTAISOLAR

Expert in Digital Intelligent PV Mounting System Solutions

Offering a diverse product portfolio covering full-material,
full-function of solar tracking and mounting systems to move towards zero-carbon future
and promote sustainable development.

RAISE A GREEN WORLD



ADVANTAGES

Antaisolar, **expert in digital intelligent PV mounting system solutions**, is a pioneer in renewable energy solutions specializing in structure and automation control. It ranks among the top 500 global new energy companies and is one of the top ten tracking system brands worldwide.

Since established in 2006, Antaisolar has been dedicated to advancing the development and application of new energy through technological innovation. The company provides global customers with a comprehensive range of products and solutions, including fixed mounting systems, tracking systems, and BIPV, covering all materials, all-functions, and all-services.

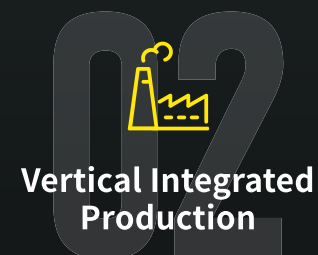
As of 2024, the company's cumulative global shipment has reached 41.7GW, with leading positions in markets such as Japan, the Australian distribution market, Southeast Asia, Mexico, and the Chilean distribution market.

In the future, Antaisolar will continue to work with our partners to build a green, environmentally friendly, and sustainable energy ecosystem, contributing to global energy transformation and sustainable development.



Front-runner of Solar Racking

Holds a leading position in Japan, the Australian distribution market, Southeast Asia, Mexico, and the Chilean distribution market.



Vertical Integrated Production

2 major production bases in Fujian and Shandong

7 supply chain bases in Jiangsu, Tianjin, Saudi Arabia, Indonesia, India, Spain and Brazil vertically integrated production and strict process control. The annual production capacity of aluminum solar racking is 10GW and steel solar racking is 15GW.



R&D Innovation

Owens a R&D team of more than 120 people, and has set up 4 global R&D centers in Shanghai, Xiamen, Zhangzhou and Madrid, Spain. Focuses on the R&D of solar tracker, fixed mounting system and high performance material.



Global Localization Service

Overseas branches and offices are strategically located in 21 countries and regions.

Have local logistics centers in Japan, Australia and Netherlands; set up overseas technical and sales teams to provide comprehensive localized services.

HISTORICAL EVOLUTION

SPROUT

2006

- Company established

2007

- Acquired ISO9000 certificate

2008

- Solar mounting system exported to Australia, US, Japan, etc.

THRIVE

2011

- The first Chinese aluminum solar mounting company entered Japan market

2013

- Ground screw production line set up expanding production base

2015

- Opened a logistic center in Japan

2016

- Accumulative solar mounts shipment reached 6GW worldwide

2017

- Set up the Philippine office
- Exchange and cooperation with representatives from light alloy research institute of Central South University

EXPLORE

2018

- Set up the Shanghai, Japan and Australia branches
- Set up the Brazil office
- Antai and Central South University signed an agreement about the establishment of academician working station

2019

- Start solar tracking system business
- Set up new production base
- Set up the Singapore and Vietnam branches
- Set up the Malaysia office

2020

- Set up Shanghai R&D Center
- Brand upgradation

2021

- Carbon steel production line fully put into operation
- Launched the world's longest solar tracker SPACE

2022

- Launch TaiyangRoof All Aluminium BIPV mounting system
- Ground breaking of the second phase of the Industrial Park
- Set up global R&D centre in Madrid, Spain

2023

- Global shipments over 30GW
- Shanghai office relocation
- Establish branches in America, the Netherlands and office in Korea
- Self-developed high-performance aluminum alloy obtains grade 6A22
- Listed among the top 500 global new energy companies

2024


- Top 10 tracker providers worldwide
- Release of the white paper "One-Stop Solution for Antaisolar 3.0 PV Tracking System".
- Release the first ESG report and the "RAISE" sustainability strategy.

GLOBAL DEPLOYMENT

Global Cumulative Shipments **41.7GW**
(until 2024)



 **Branch office**
Shanghai

 **Subsidiaries**
Singapore Australia Japan India Spain Hong Kong (China) Shandong (China)
the United States Netherlands

 **Offices**
Vietnam Malaysia Brazil Jordan Poland Dubai Argentina Chile Mexico
Philippines South Korea

 **Logistics centers**
Japan Australia Netherlands

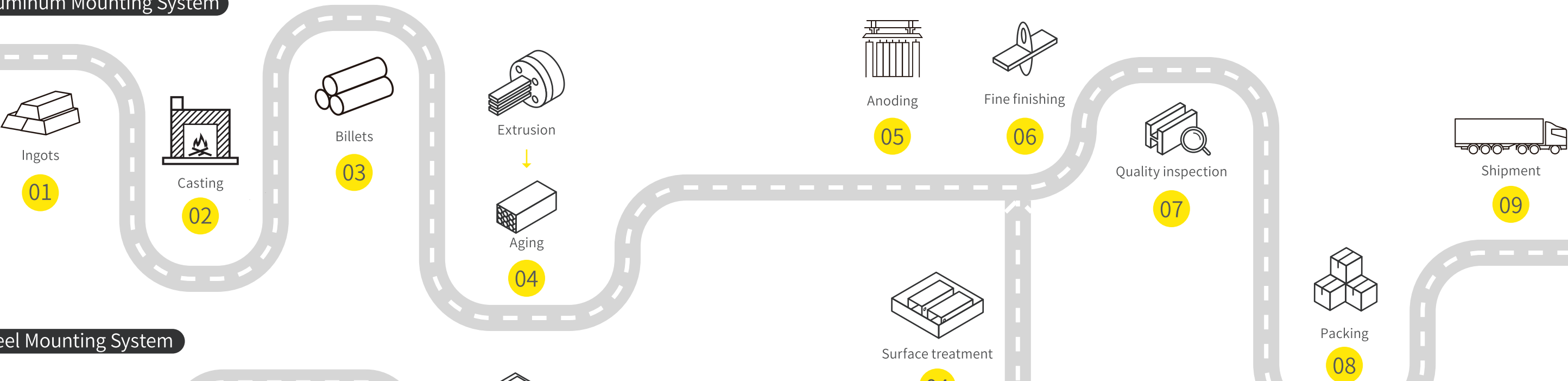
 **Production bases**
Fujian Shandong

 **Supply chain bases**
Jiangsu Tianjin Indonesia India
Spain Brazil Saudi Arabia

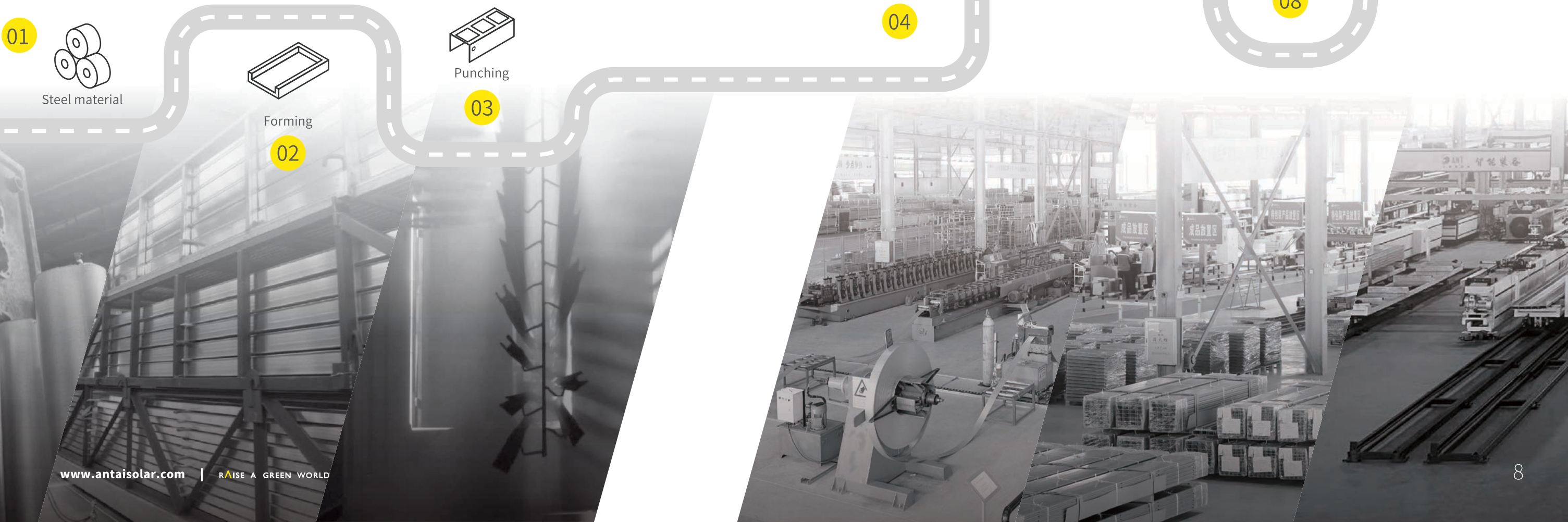
 **Headquarter**
XIAMEN · CHINA

VERTICAL INTEGRATED PRODUCTION

Aluminum Mounting System



Steel Mounting System



QUALITY CONTROL

In-House Lab Testing



Third party certification

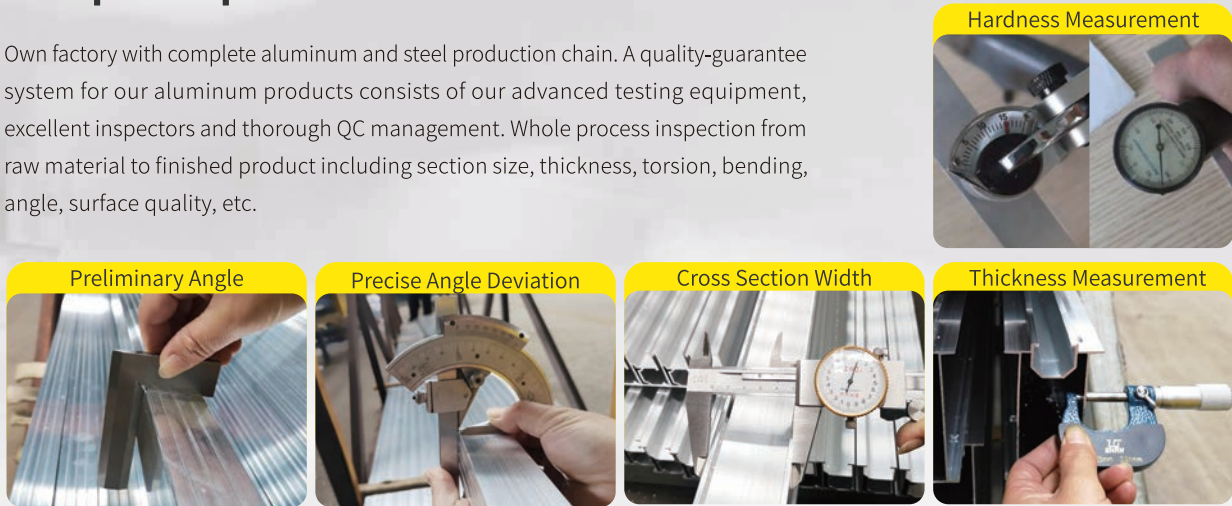
Products are certified by third-party testing agencies in different world-wide regions to ensure that product performance meets architectural and design standards for global regions.

Certified by third-party testing agencies regularly



Sample Inspection

Own factory with complete aluminum and steel production chain. A quality-guarantee system for our aluminum products consists of our advanced testing equipment, excellent inspectors and thorough QC management. Whole process inspection from raw material to finished product including section size, thickness, torsion, bending, angle, surface quality, etc.



Material R&D

Establish an academican and expert workstation with Central South University to carry out research and development of high-performance materials; Deepen school-enterprise cooperation with Shanghai Jiaotong University and other domestic institutions of higher learning to promote all-round integration of industrial technologies.

Unique High performance Aluminum alloy

Items (Mechanical properties)	AL6063-T5	AT6005-T5	Antai AL6005-T6	6A22-T6
Tensile strength(MPa)	175	250	290	300
Proof strength(MPa)	130	200	265	285
Elongation after fracture(%)	7	7	10	10

ALUMINUM ALLOY, 6A22

Antaisolar has independently developed a high-performance aluminum alloy, 6A22, which has significantly improved mechanical properties while maintaining the same production process and cost.

Its high strength characteristics allow the PV mounting system to better withstand harsh climate conditions such as heavy snow and strong winds, thereby improving system stability and extending service life.

300-335 MPa
tensile strength

285-310 MPa
yield strength

32.6%
yield strength

GLOBAL SERVICE

Global Network & Localization Service	Strategic layout of overseas branches and offices; Local sales and technical team service.
Experienced Engineer & Site Support	On-site technical support in early stage of project; On-site technical installation guidance if necessary.
Professional Logistics	Customized logistics services provided for fast access to site; Globally warehouse layout.
Reliable After-sales Service	10 years warranty; 7*24 on call, designing proposal offered within 24 hours; Multilingual, 1 to 1 exclusive customer service.



CONTENTS

PITCHED ROOF

- 13 L Feet With C Rail
- 15 Trapezoid L Feet With C Rail
- 17 Hook System
- 19 Kliplok Without Rail System

FLAT ROOF

- 21 Adjustable Tilt Mounting System
- 23 Triangle System
- 25 Ballast System
- 27 TaiyangRoofBIPV Mounting System

GROUND

- 29 Aluminum Ground Mounting System
- 31 Pile Ground Mounting System
- 35 Steel Ground Mounting System

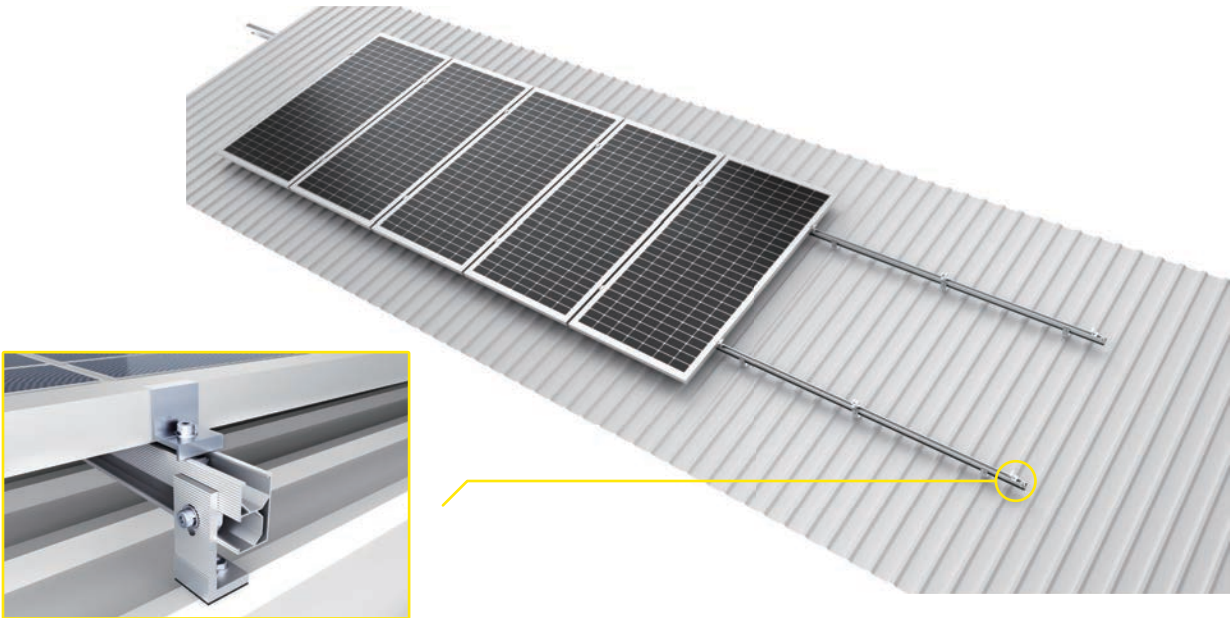
CARPORT

- 35 Aluminum Carport Mount (Standard)
- 37 Aluminum Carport Mount (Waterproof)

SCREW

- 43 Ground screw

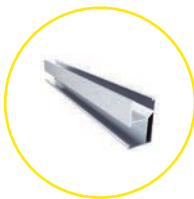
METAROOF-MT L FEET WITH C RAIL



Components



L Bracket



Rail



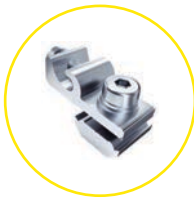
Rail Splice



Mid Clamp



End Clamp



Grounding Clip



Cable Clip



Cable Clip

Features

- 01** Good flexibility to match various types of roof clamps.
- 02** Good stability when attached directly on roof purling.
- 03** Compliant with the Australian and other international standards.

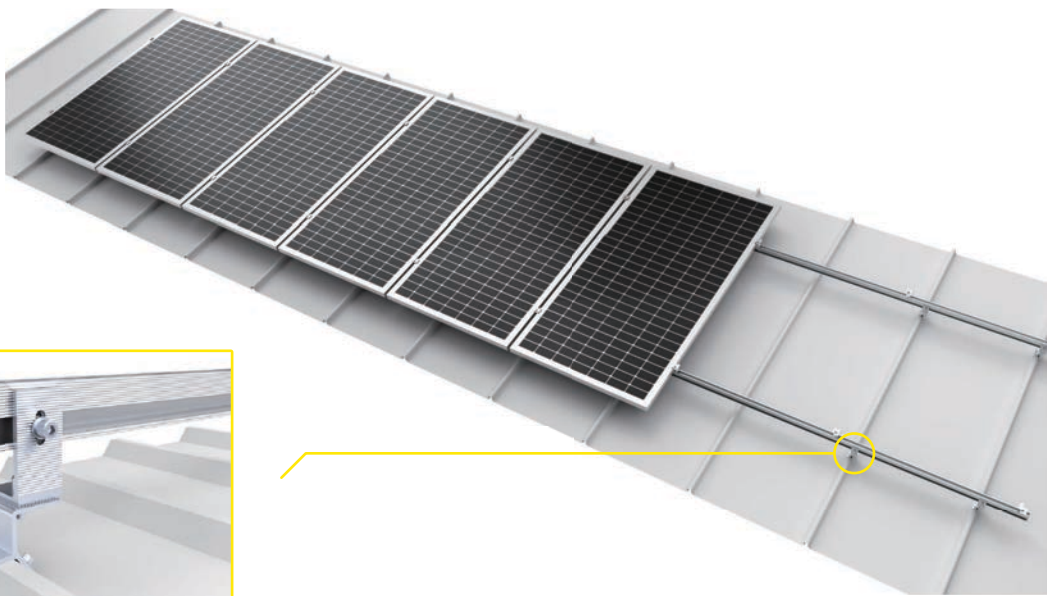
Specification

Roof Type	Metal roof
Tilt Angle	0°-45°
Wind Load	60m/s
Snow Load	1.6KN/m ²
Applicable Solar Module	Framed/Frameless
Panel Layout	Portrait/Landscape
Design Standard	BS EN1991, ASCE7-10, BS 6399, AS-NZS 1170, GB 50009-2012, MS 1553
Material	AL-6005-T6 & SUS304 & EPDM
Color	Sliver/Black
Warranty	10-year



METAROOF-MT

TRAPEZOID L FEET WITH C RAIL



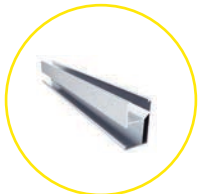
Components



Trapezoidal Clamp



L Feet Clamp



Rail



Rail Splice



Mid Clamp



End Clamp



Grounding Lug Kit



Grounding Clip



Cable Clip

Features

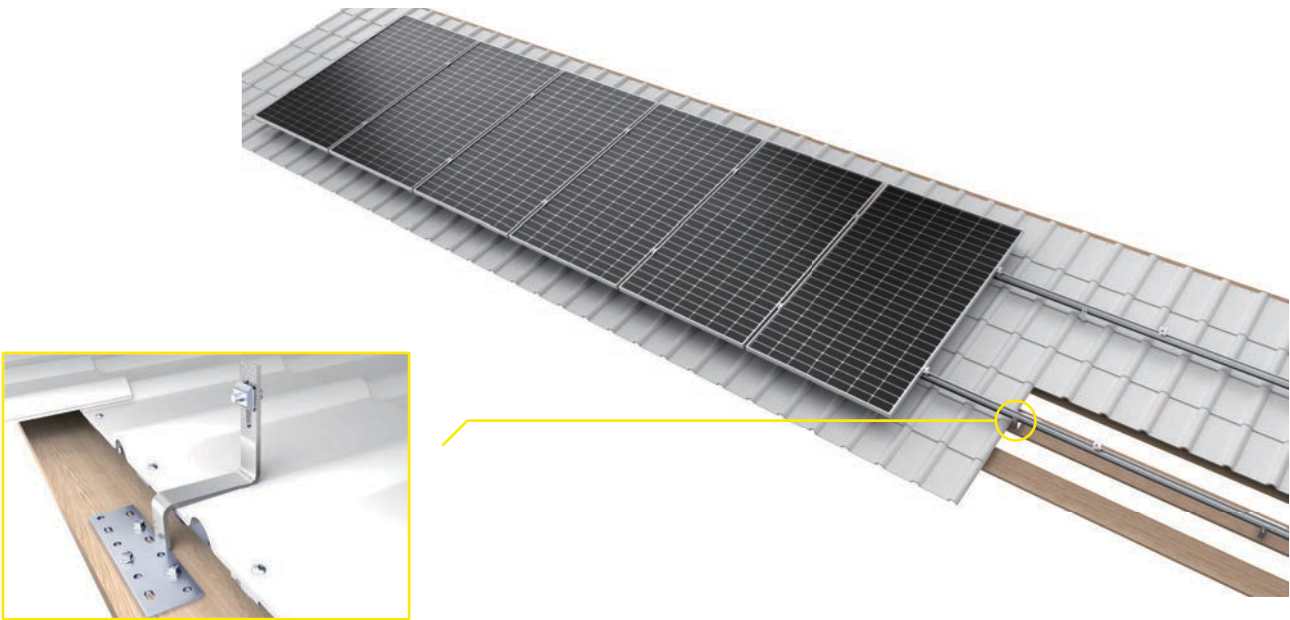
- 01 Non-penetrating roof clamp mounting ensures watertightness.
- 02 A variety of roof clamps suit for all roofing sheets.
- 03 Simple and quick installation by fixing the clamp to the metal roofs
- 04 Expand installation availability while there is no suitable fixing purlin under the roof.

Specification

Roof Type	Metal roof
Tilt Angle	0°-45°
Wind Load	60m/s
Snow Load	1.6KN/m ²
Applicable Solar Module	Framed/Frameless
Panel Layout	Portrait/Landscape
Design Standard	BS EN1991, ASCE7-10, BS 6399, AS-NZS 1170, GB 50009-2012, MS 1553
Material	AL-6005-T6 & SUS304
Color	Sliver/Black
Warranty	10-year



METAROOF-TR HOOK SYSTEM



Components



Tile Roof Hook



Rail



Rail Splice



Mid Clamp



End Clamp



Grounding Lug Kit



Grounding Clip



Cable Clip

Features

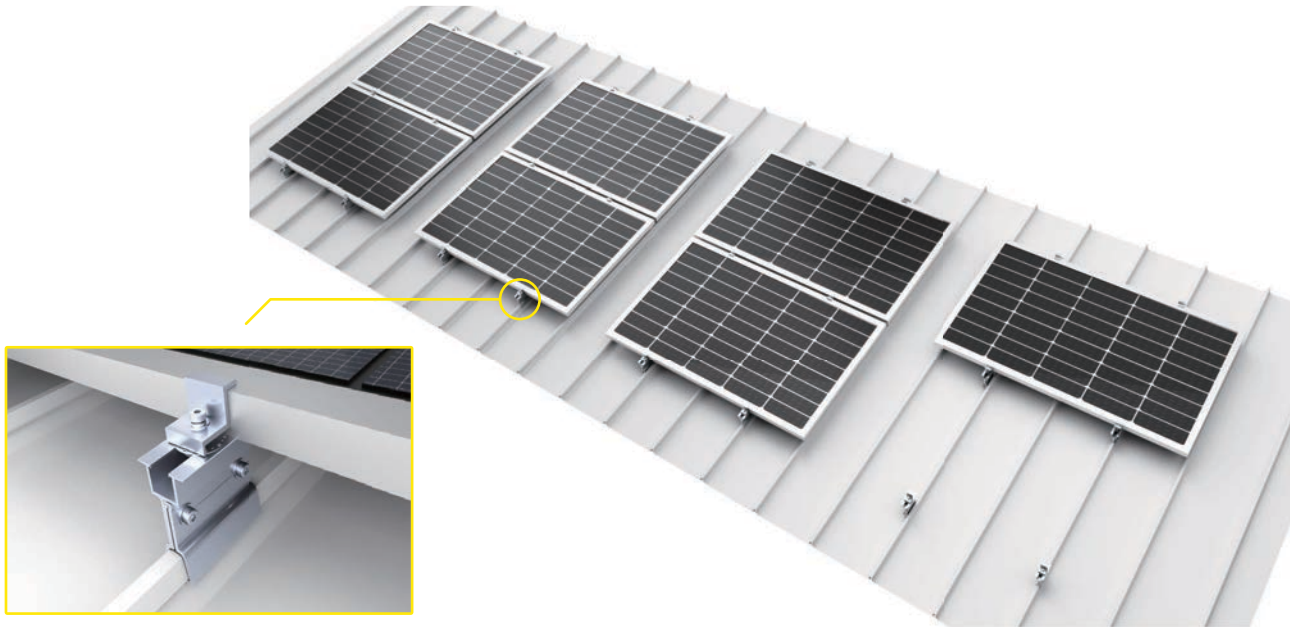
- 01** A variety of stainless steel roof hooks suit for pantile, plain tile or slate tiles.
- 02** Comprehensive range of aluminum rails for varying load profiles.
- 03** Compliant with European, American, Australian and other international standards

Specification

Roof Type	Tile roof
Tilt Angle	0°-45°
Wind Load	60m/s
Snow Load	1.6KN/m ²
Applicable Solar Module	Framed/Frameless
Panel Layout	Portrait/Landscape
Design Standard	BS EN1991, ASCE7-10, BS 6399, AS-NZS 1170, GB 50009-2012, MS 1553
Material	AL-6005-T6 & SUS304
Color	Sliver/Black
Warranty	10-year



METAROOF-MK KILPLOK WITHOUT RAIL SYSTEM



Components



Kliplok Without Rail



Mid Clamp



End Clamp



Grounding Lug Kit



Grounding Clip



Cable Clip



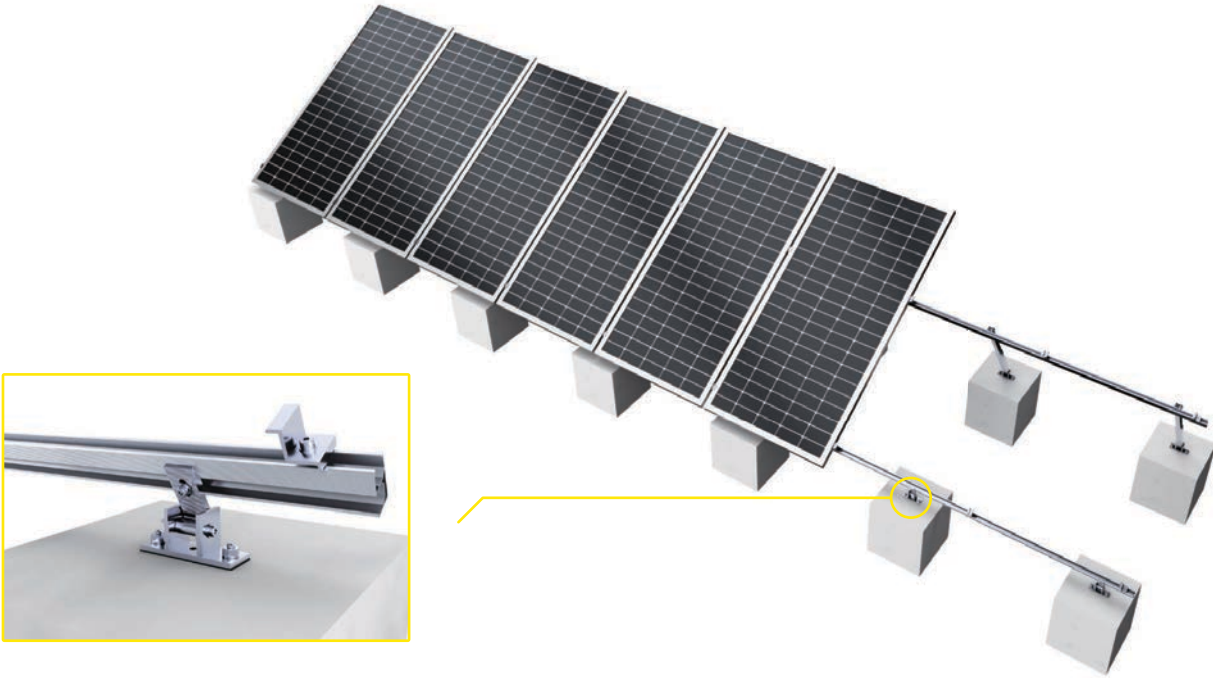
Features

- 01** Fast installation without rail and saving cost.
- 02** Non-penetrating roof clamp mounting ensure waterproofing
- 03** Professional packaging solution for easy logistics, and cost-effective warehousing

Specification

Roof Type	Metal roof
Tilt Angle	0°-45°
Wind Load	60m/s
Snow Load	1.6KN/m ²
Applicable Solar Module	Framed/Frameless
Panel Layout	Portrait/Landscape
Design Standard	BS EN1991, ASCE7-10, BS 6399, AS-NZS 1170, GB 50009-2012, MS 1553
Material	AL-6005-T6 & SUS304
Color	Sliver/Black
Warranty	10-year

METAROOF-FR ADJUSTABLE TILT MOUNTING SYSTEM



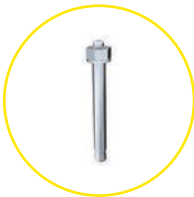
Components



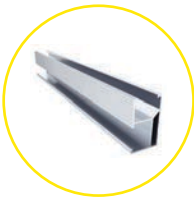
Front Leg



Back Leg



Expansion Bolt



Rail



Rail Splice



Mid Clamp



End Clamp



Grounding Lug Kit



Grounding Clip



Cable Clip



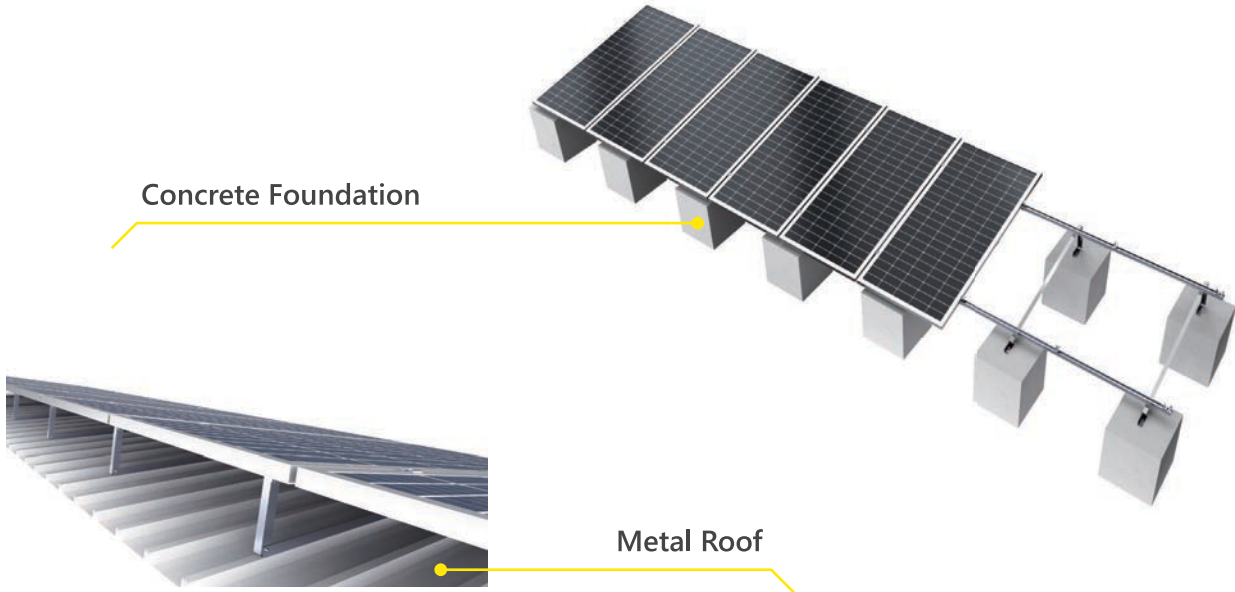
Features

- 01 Allow for project-specific adjustments and optimize solar power output.
- 02 Compact package before shipment for easy transportation and retail.
- 03 Fit for different metal roof or open concrete terrain applications.
- 04 Highly pre-assembly to save on site installation time.

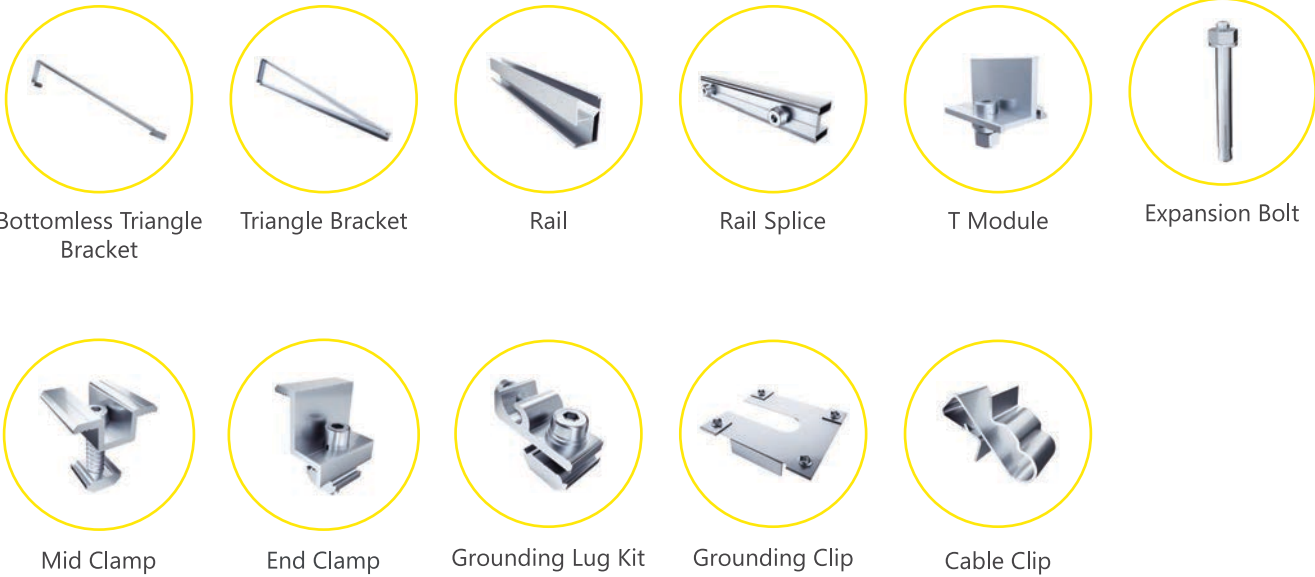
Specification

Roof Type	Pitched Roof / Flat Roof
Tilt Angle	Fixed 10-15°, 15-30°, 30-60°
Wind Load	Up to 60m/s
Snow Load	Up to 60cm
Applicable Solar Module	Framed/Frameless
Panel Layout	Portrait/Landscape
Design Standard	BS EN, ASCE7-10, BS 6399, AS-NZS 1170, GB 50009-2012, MS 1553
Material	AL-6005-T6, SUS304, 410
Color	Sliver/Black
Warranty	10-year

METAROOF-FR TRIANGLE SYSTEM



Components



Features

- 01 Universal design for flat roof or open terrain applications.
- 02 Various combinations such as ballasted block or roof penetration.
- 03 Pre-assembly triangle support and fold design save on site installation time.

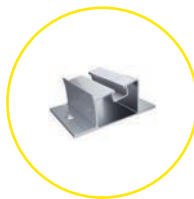
Specification

Roof Type	Pitched Roof / Flat Roof
Tilt Angle	Fixed 10-15°, 15-30°, 30-60°
Wind Load	Up to 60m/s
Snow Load	Up to 80cm
Applicable Solar Module	Framed/Frameless
Panel Layout	Portrait/Landscape
Design Standard	BS EN, ASCE7-10, BS 6399, AS-NZS 1170, GB 50009-2012, MS 1553
Material	AL-6005-T6, SUS304, 410
Color	Sliver/Black
Warranty	10-year

METAROOF-FR BALLAST SYSTEM



Components



Front Base



Back Base Kit



Beam



Splice For Rail



End Clamp



Grounding Clip



Cable Clip



Features

- 01 Non-penetrating roof ballast mounting ensure water-tightness.
- 02 Simple and pre-assembled structure saves the on-site installation time and labor cost.
- 03 Ballast weight is customizable to different wind zone.

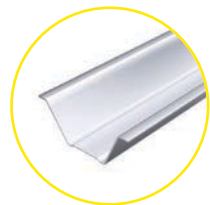
Specification

Roof Type	Flat Roof / Open Terrian
Tilt Angle	10°
Wind Load	50m/s
Snow Load	1.0KN/m ²
Applicable Solar Module	Framed / Frameless
Panel Layout	Portrait / Landscape
Design Standard	BS EN, ASCE7-10, BS 6399, AS-NZS 1170, GB 50009-2012, MS 1553
Material	AL-6005-T6, SUS304
Color	Sliver / Black
Warranty	10-year

TAIYANGROOF BIPV MOUNTING SYSTEM



Components



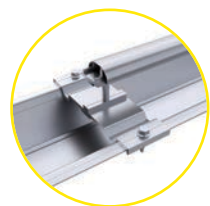
V-shaped Water Guiding Beam



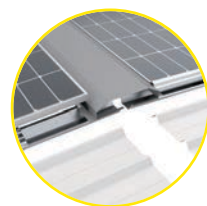
U-shaped Water Guiding Beam



Inverted T-shaped rubber strip



Waterproof Cover Plate



Roof Ridge Cover Plate

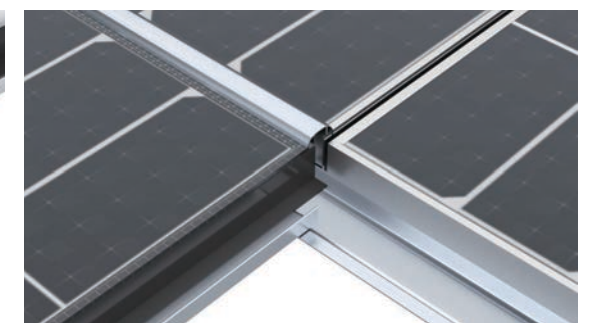
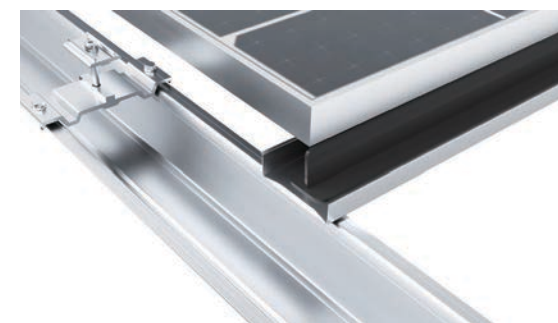


Flashing Edge Wrapping



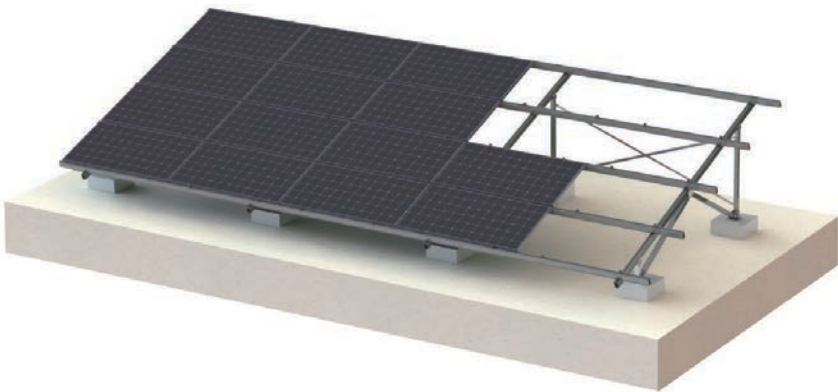
Features

- 01** Combination of building safety and power generation efficiency.
- 02** Utilizing Antaisolar's high-strength aluminium alloy for excellent stability and reliability.
- 03** The six patent components keep the whole structure watertight, while the installation, operation and maintenance are simple, efficient and cost-saving.

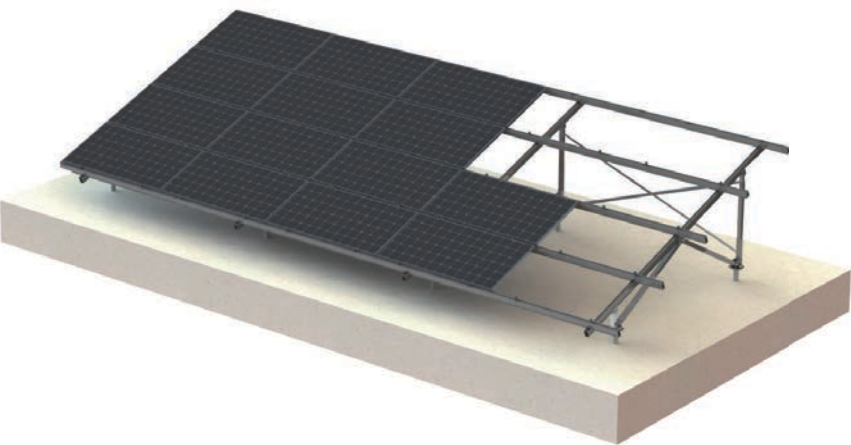


METAGROUND-AL GROUND MOUNTING SYSTEM

Concrete foundation



Ground screw foundation



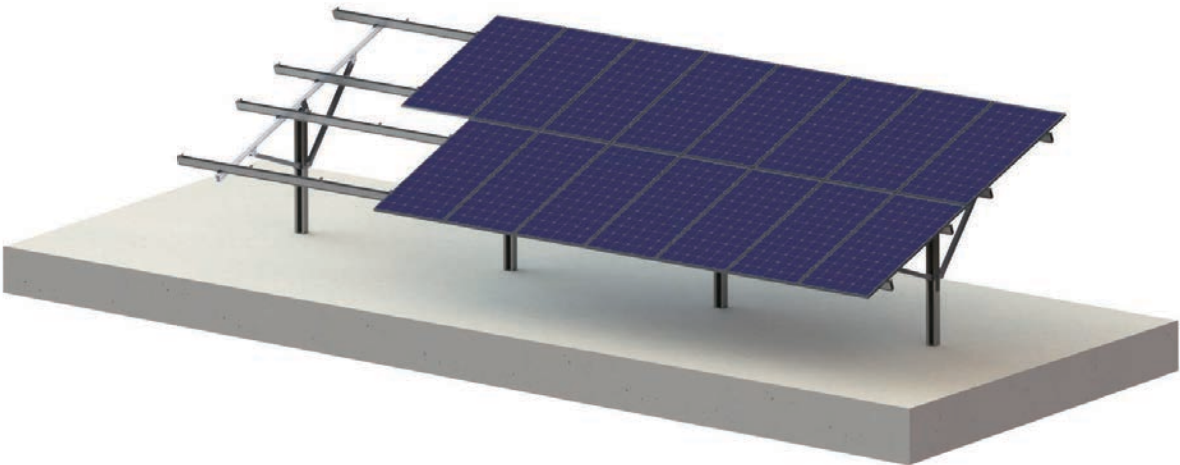
Features

- 01 Aluminum structure to offer high corrosion resistant and lightweight.
- 02 Different designs to meet high loads caused by local wind and snow condition.
- 03 Pre-assembly supporting beam to save on site installation time.
- 04 Ground screw or concrete block foundation are optional.

Specification

Ground Type	Open terrain, landfill, and disposal
Tilt Angle	Up to 60°
Wind Load	Up to 60m/s
Snow Load	Up to 50cm
Applicable Solar Module	Framed /Frameless
Panel Layout	Portrait / Landscape
Design Standard	BS EN, ASCE7-10, BS 6399, AS-NZS 1170, GB 50009-2012, MS 1553
Material	AL-6005-T6, SUS304
Color	Sliver / Black
Warranty	10-year

METAGROUND-AL/STEEL PILE GROUND MOUNTING SYSTEM



Components



Pre-assembled Beam



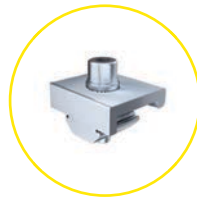
Pillar



Rail



Rail Splice



Rail Clamp



End Clamp



Inter Clamp



Grounding Clip
(Optional)



Grounding Lug Kit
(Optional)



Cable Clip
(Optional)

Features

- 01** Fit for flat ground, uneven complex terrain and slope conditions.
- 02** Flexible adjustment for angles or height while installation.
- 03** Pre-assembly supporting beam to save on-site installation time.
- 04** Ramming posts eliminates the need for additional excavation works.

Specification

Application	Open terrain
Elevation angle	Up to 60°
Foundation	Pile in or pre-cast, bored pier
Snow load	Up to 150cm
Recommended wind speed	Up to 60 m/s
PV module	Framed, unframed
Module orientation	Landscape, portrait
Material	Anodized aluminum 6005 T6, stainless steel 304, 410 Hot-dipped galvanized steel Q235B, Q235B



METAGROUND-AL/STEEL PILE GROUND MOUNTING SYSTEM



Components



Pre-assembled Beam



Pillar



Rail



Rail Splice



Rail Clamp



End Clamp



Inter Clamp



Grounding Clip
(Optional)



Grounding Lug Kit
(Optional)



Cable Clip
(Optional)



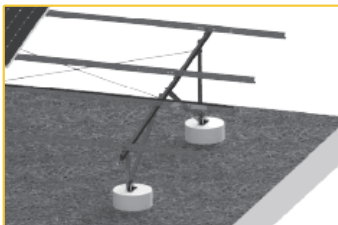
Features

- 01 Fit for flat ground, uneven complex terrain and slope conditions.
- 02 Flexible adjustment for angles or height while installation.
- 03 Pre-assembly supporting beam to save on-site installation time.
- 04 Ramming posts eliminates the need for additional excavation works.

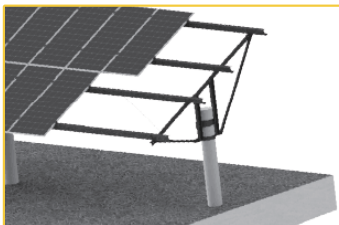
Specification

Application	Open terrain
Elevation angle	Up to 60°
Foundation	Pile in or pre-cast, bored pier
Snow load	Up to 150cm
Recommended wind speed	Up to 60 m/s
PV module	Framed, unframed
Module orientation	Landscape, portrait
Material	Anodized aluminum 6005 T6, stainless steel 304, 410 Hot-dipped galvanized steel Q235B, Q235B

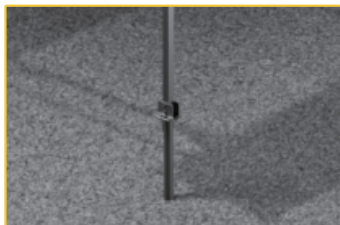
METAGROUND-STEEL GROUND MOUNTING SYSTEM



Concrete Foundation



PHC



Screw Pile

Components



C Steel Rail



Pillar



Rail Splice



L Connector



Rail Clamp



Inter/ End clamp



10 YEARS
WARRANTY

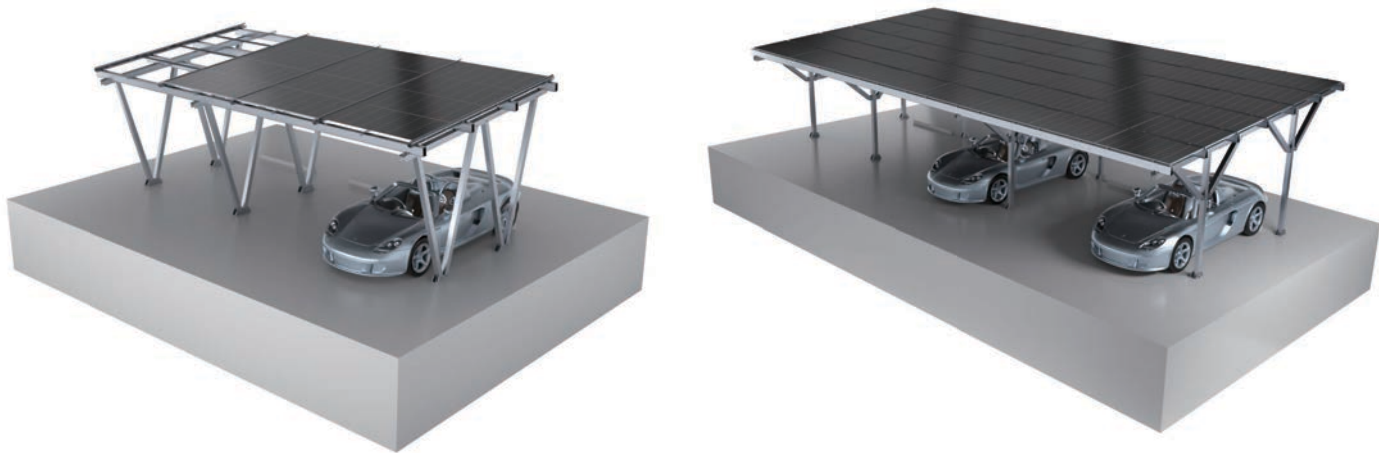
Features

- 01** Economical and reliable solutions for solar projects on a free surface.
- 02** MAC steel or carbon steel is adopted as the main material to form a stable and cost-effective design.
- 03** Pre-assembly supporting beam to save on site installation time.
- 04** Ground screw or concrete block foundation are optional.

Specification

Application	Open terrain
Adjustable angle	Up to 20°
Foundation	7500mm above
Snow load	Up to 150cm
Recommended wind speed	Up to 60m/s
PV module	Framed, unframed
Module orientation	Landscape, portrait
Material	MAC steel; Hot-dipped galvanized steel Q235B, Q355B; stainless steel 304, 410

METAGROUND-AL CARPORT MOUNTING SYSTEM (STANDARD)



Components



End Clamp



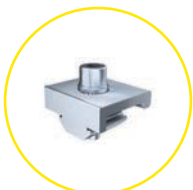
Mid Clamp



Rail



Rail Splice



Rail Clamp



Beam



Pole



Small Foot Seat



Big Foot Seat



Embedded Bolt



Ground Lug Kit
(Optional)



Grounding Clip
(Optional)



Cable Clip
(Optional)

Features

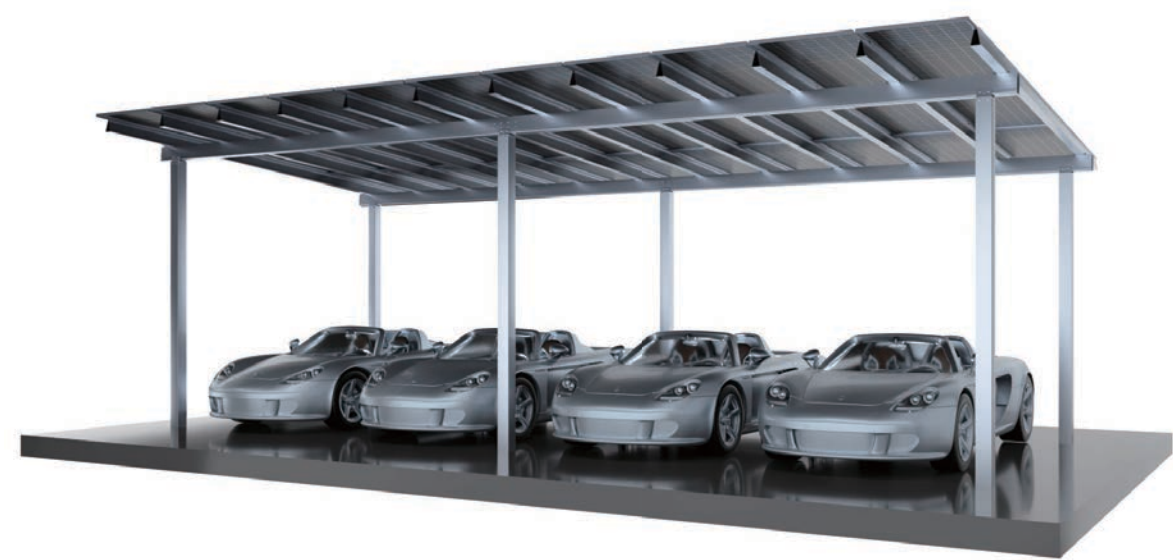
- 01** Effectively use of the space while generating electricity.
- 02** Different options for both single and double rows of parking.
- 03** Pre-assembly supporting beam to save on site installation time.
- 04** Various foundation options include precast concrete, bored pier and ground screw.

Specification

Application	Open terrain
Elevation angle	Recommend below 30°
Distance between footings	5000mm above
Snow load	Up to 150cm
Recommended wind speed	Up to 60m/s
PV module	Framed, unframed
Module orientation	Landscape, portrait
Material	Anodized aluminum 6005 T6 stainless steel 304, 410 Hot-dipped galvanized steel Q235B, Q355B



METAGROUND-AL CARPORT MOUNTING SYSTEM (STANDARD)



Components



End Clamp



Mid Clamp



Rail



Rail Splice



Rail Clamp



Beam



Pole



Small Foot Seat



Big Foot Seat



Embedded Bolt



10
YEARS
WARRANTY

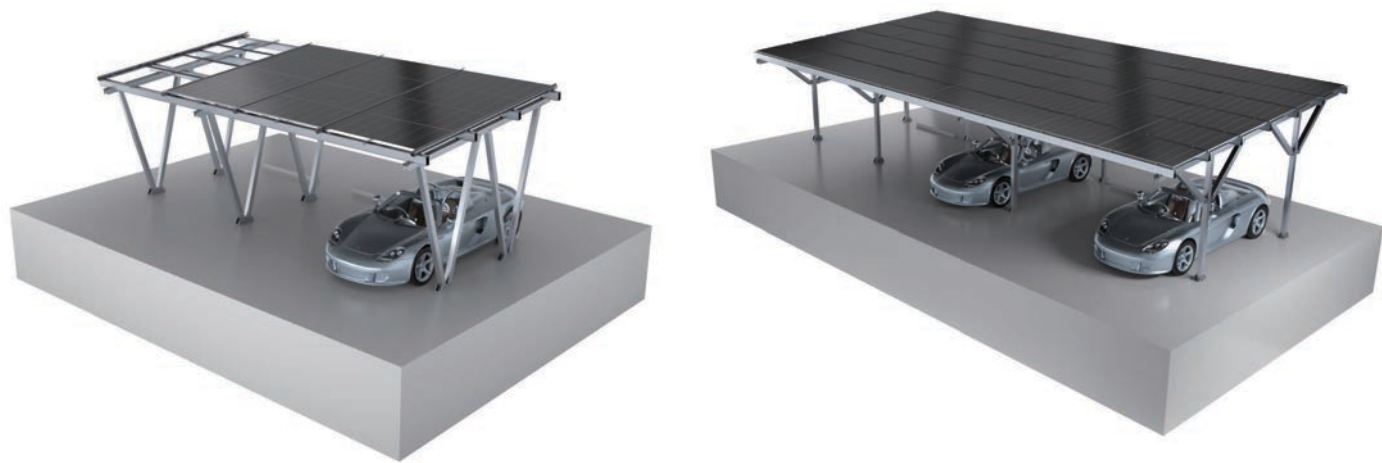
Features

- 01 High corrosion. Aluminum structure to offer high corrosion resistant and lightweight.
- 02 Parking Friendly Structural Design: unobstructed door opening and easier reversing
- 03 Highly pre-assembled. Pre-assembly supporting beam to save on site installation time.
- 04 Optional foundation. Ground screw or concrete block foundation are optional.

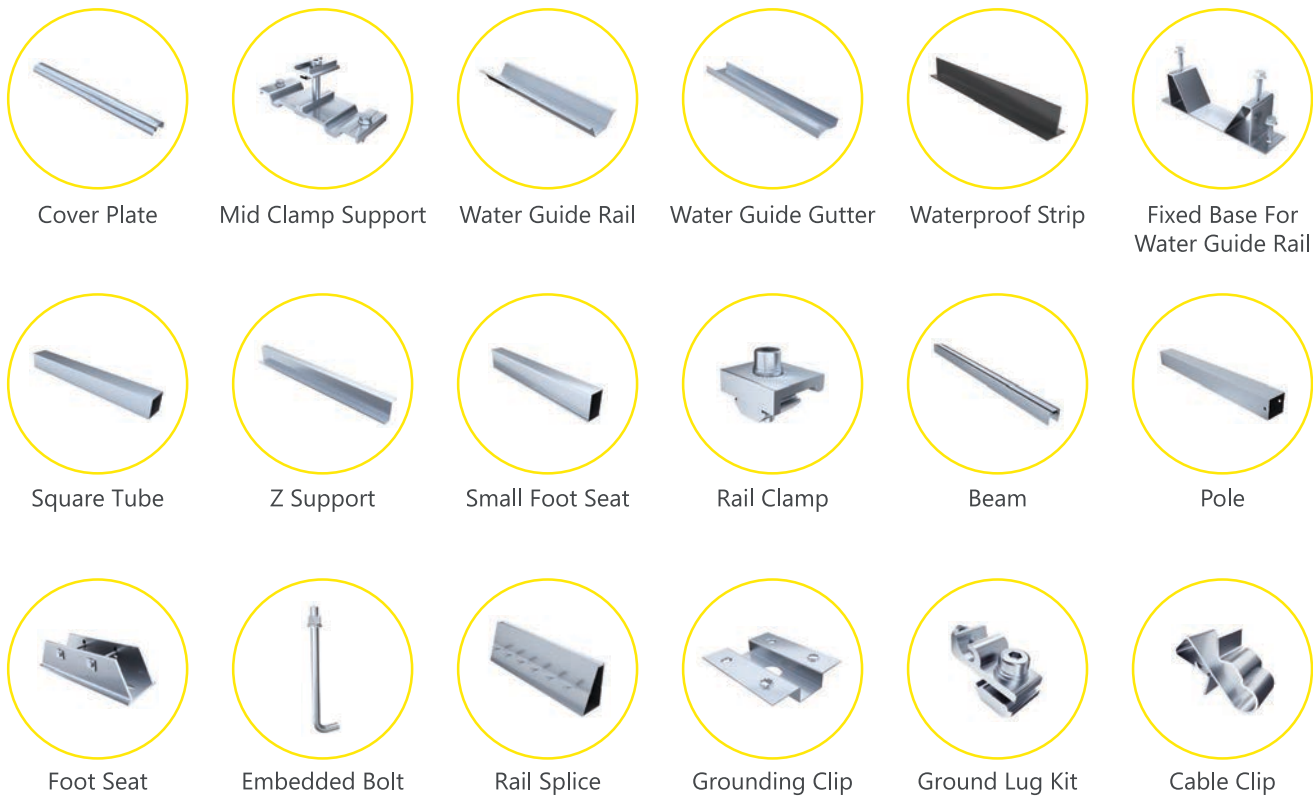
Specification

Ground Type	Al
Tilt Angle	5°
Wind Load	38-46m/s
Snow Load	50-99cm
Applicable Solar Module	Framed/Frameless
Panel Layout	Portrait/Landscape
Design Standard	Eurocode EN 1990/1991, ASCE7-10, GB 50009-2012
Material	AL-6005-T6, SUS304
Color	Sliver/Black
Warranty	10-year

METAGROUND-AL CARPORT MOUNTING SYSTEM (WATERPROOF)



Components



Features

- 01** Effectively use of the space while generating electricity.
- 02** Fully waterproof design for framed module installation.
- 03** Pre-assembly supporting beam to save on site installation time.
- 04** Various foundation options include precast concrete, bored pier and ground screw.

Specification

Application	Open terrain
Elevation angle	Recommend below 30°
Distance between footings	5000mm above
Snow load	Up to 150cm
Recommended wind speed	Up to 60m/s
PV module	Framed, unframed
Module orientation	Landscape, portrait
Material	Anodized aluminum 6005 T6 stainless steel 304 Hot-dipped galvanized steel Q235B, Q355B

HOT-DIP GALVANIZED STEEL GROUND SCREW



Ground Screw

Ground Screw

Ground Screw



U Pile

C Pile



Manual piling diver

Easy operation, cost effection for small size ground project.

Pile diver

High installation effeciency, 30-75s for one screw in, ideal for large scale project.

